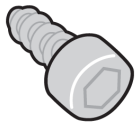
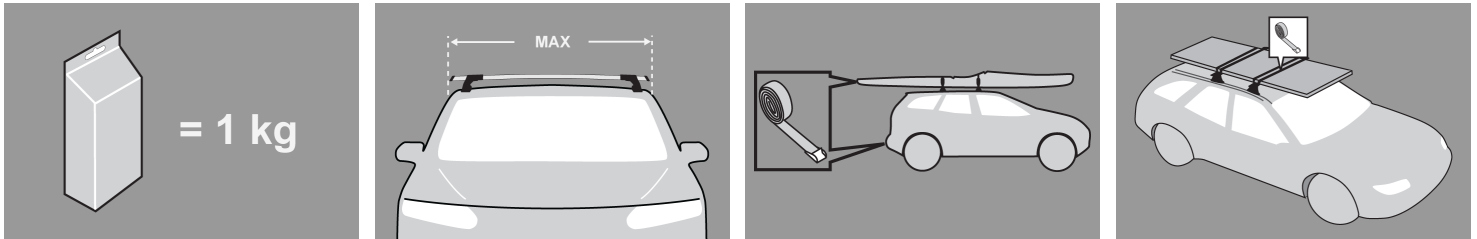
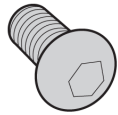


**GB** Fitting Instructions for Basic Carrier



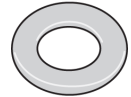
x 8



x 4



x 4



x 4

## First Time Installation



- Remove parts from packaging and check contents. Contact your Prorack dealer if parts are missing or damaged.



- This kit fits type A, B, C and D.
- These instructions show type A crossbar fitted. They also apply to type B, C and D.



- Use keys to remove covers.



- Use hex screwdriver to reverse adjusting screw 10 turns.



- Press adjusting screw and pull crossbar legs out. Refer to the crossbar instructions for crossbar adjustment.
- Ensure each end of the crossbar is adjusted equally.



- Remove clamp block by pressing backwards.



- Remove both pins from each leg (use spanner located inside left hand cover to assist).



- Detach foot from leg. Store loose parts in a safe place.
- Repeat for all legs.



- Select a guttermount assembly from fitting kit. Unscrew and remove clamps.



- Assemble guttermount assembly into leg (ensure guttermount blade interlocks with leg).



- Using short capscrew and washer, secure assembly onto leg (use Hex Screwdriver supplied with crossbar to assist)



- Use two M5 x 12 mm self tapping screws to secure the leg to the guttermount blade.
- Do not over tighten.
- Repeat for all legs.

## Fitment



- Place crossbar on vehicle. Minimum recommended spacing between the bars is 700mm (unless otherwise stated).
- Place crossbar into gutter of vehicle.
- Adjust crossbar in or out to suit vehicle. Refer to the crossbar instructions for crossbar adjustment.



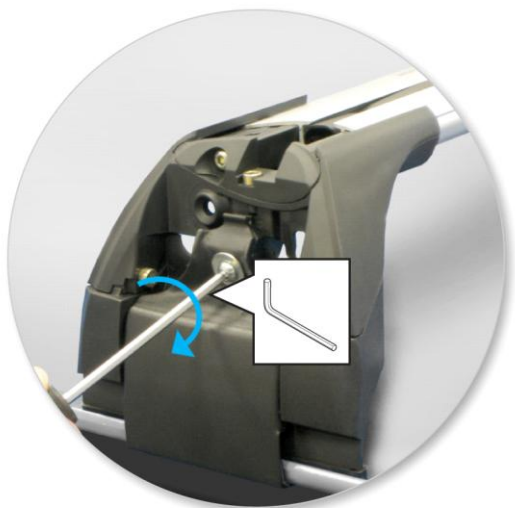
- Loosely position crossbar ensuring the guttermount blade is hard against the inside of the vehicle gutter.



- Tighten adjusting screw to 5 Nm.



- Loosely line up clamp over the vehicle gutter.



- Use same cap screw and washer to secure clamp onto leg.



- Repeat for all legs.
- Check crossbar is securely attached to the vehicle.
- Use keys to fit and lock covers

**CAUTION:**

**Recheck all fasteners immediately after a load is applied to the crossbars.**

**Regularly check screws are tight.**

---



## Maintenance

- Clean the car roof and surfaces of the product that will be in contact with the car roof.
- Follow the fitting instructions for fitting the product to your vehicle. Make sure all steps are carried out in order.
- Set crossbars a minimum distance of 700mm apart where no other distance is specified in the fitting instructions. This is especially important when carrying long loads.
- Check unit is securely attached whenever you refit it to the vehicle. If the unit feels loose, refer to the fitting instructions and readjust.
- Some sunroofs and radio antennae cannot be used when the product is fitted.
- Do not modify this product.
- Refer to the maximum permitted load capacity specified in the fitting instructions. Do not exceed the vehicle manufacturers roof load rating if it is lower than the maximum load capacity specified in the fitting instructions.
- Loads should not overhang the sides of the product and be evenly distributed with the lowest possible centre of gravity.
- Long loads should be secured with non-elastic straps to the front and rear of the vehicle.
- Objects with pointed ends (skis) should be carried with the pointed ends to the rear of the vehicle.
- Remove all loose or removable objects from the load prior to loading.
- Make sure all loads are securely fastened with non-elastic straps. Check regularly during longer journeys.

- A loaded roof rack system can alter the performance of your vehicle. Be especially aware of the effects of side winds, changing of direction, and braking performance. Avoid rapid acceleration and deceleration. Drive carefully.
  - Note that the total height of the vehicle increases when upright loads are carried.
  - Products should be locked during transport if they have locks fitted.
  - Check and replace worn out or defective parts.
  - Keep the product clean and maintained.
  - Never drive into a car wash with the roof rack system fitted.
  - Lubricate locks and adjusting screws at regular intervals.
  - Remove the products from the vehicle when not in use. Make sure all loose parts are stored safely.
- 

- Hubco Automotive Ltd  
P. O. Box 11017  
Christchurch  
NEW ZEALAND

[www.whispbar.com](http://www.whispbar.com)

---