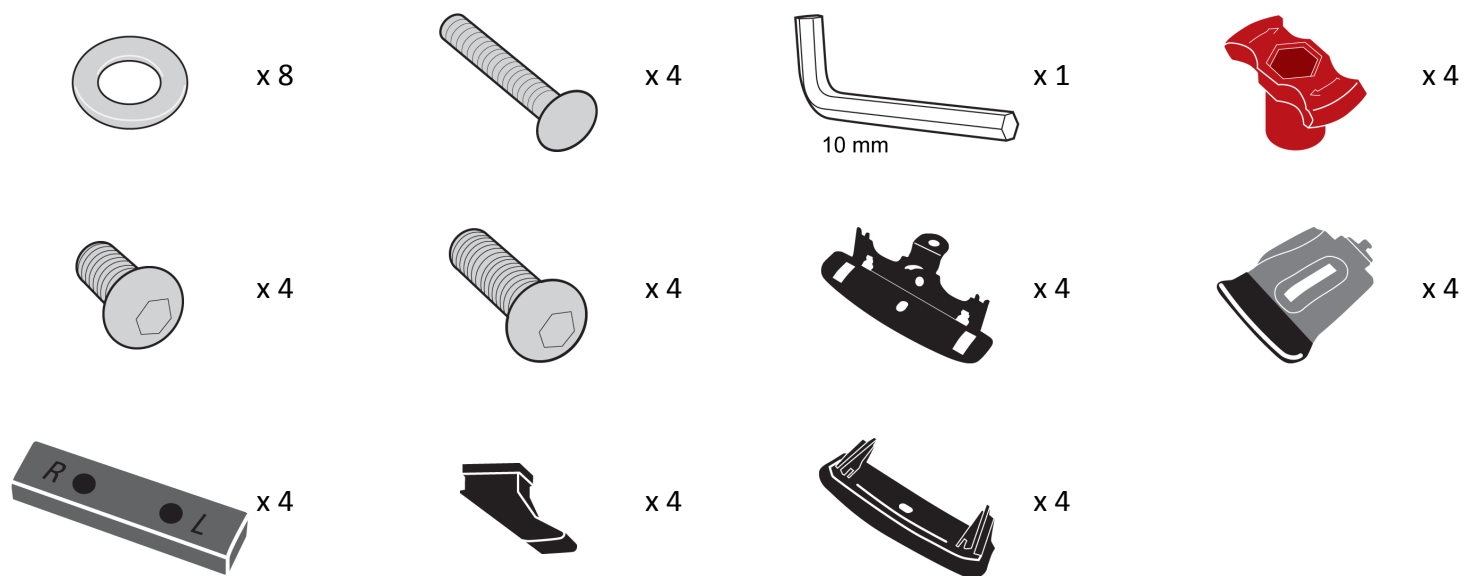
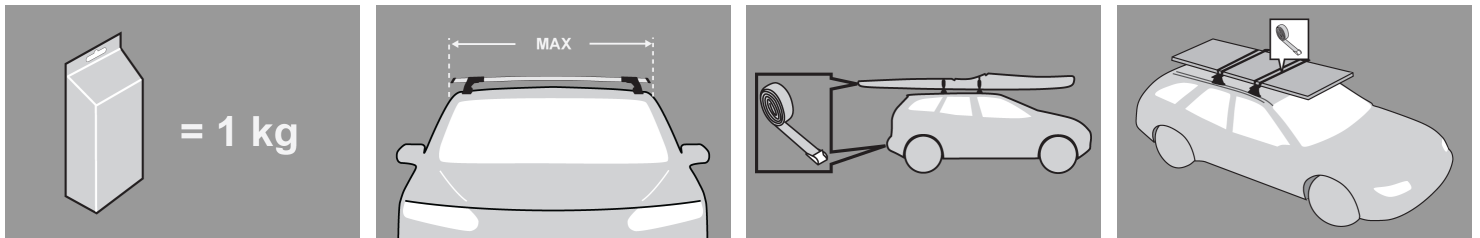


GB Fitting Instructions for Basic Carrier



First Time Installation



- Remove parts from packaging and check contents. Contact your Prorack dealer if parts are missing or damaged.



- This kit fits type A, B, C and D.
- These instructions show type A crossbar fitted. They also apply to type B, C and D.



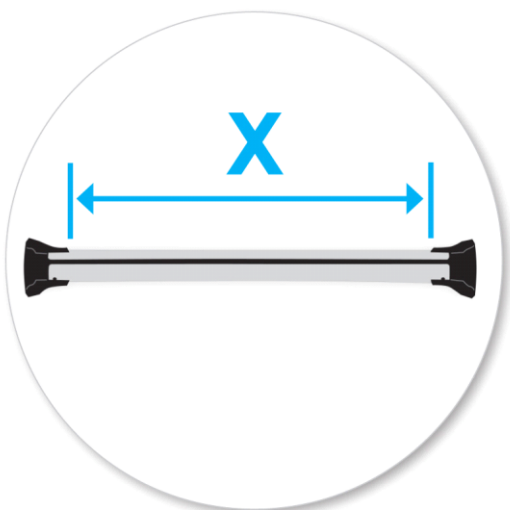
- Use keys to remove covers.



- Use hex screwdriver to reverse adjusting screw 10 turns.



- Press adjusting screw and pull crossbar legs out. Refer to the crossbar instructions for crossbar adjustment.
- Ensure each end of the crossbar is adjusted equally.



- Please check the rear of this manual for information relating specifically to your vehicle.



- Remove clamp block by pressing backwards.



- Remove both pins from each leg (use spanner located inside left hand cover to assist).



- Detach foot from leg. Store loose parts in a safe place.
- Repeat for all legs.



- Assemble metal loadplate and rubber pad from the fitting kit.
- Repeat for all four items.



- Assemble metal loadplate into leg. Ensure loadplate interlocks with the leg.



- Using short cap screw and washer, secure assembly onto leg (use Hex Screwdriver supplied with crossbar to assist)
- Repeat for all legs.



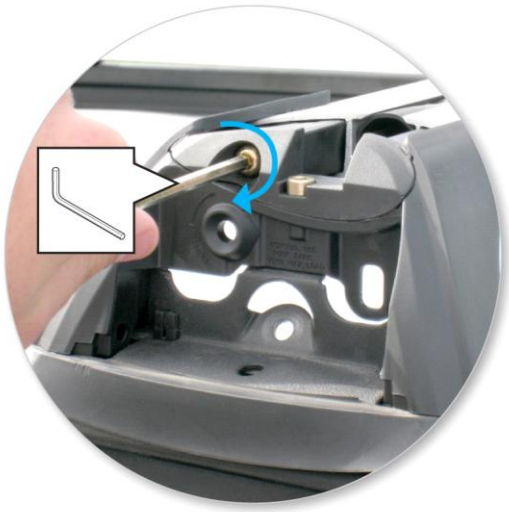
- Pull rubber pad back slightly and insert location peg into the rear position on the metal loadplate. Peg will click into place.



- Place crossbar on vehicle. Minimum recommended spacing between the bars is 700mm (unless otherwise stated).
- Crossbar can be positioned anywhere along the roof rail.
- Make sure there is no interference between what you intend to carry with aerials, sunroof or tailgate.



- Ensure location peg engages the inner side of the rails.
- Adjust crossbar in or out to suit vehicle. Refer to the crossbar instructions for crossbar adjustment.
- Ensure that the crossbar is adjusted evenly at both ends.



- Tighten adjusting screw to 5 Nm.



- Temporarily mark with masking tape or pencil the position of crossbars on the rail.



- Remove crossbar off vehicle and turn upside down. Select metal clamp and fit small tongue into position 2 marked on the leg.



- Swing clamp towards metal loadplate and check clamp tongue is engaged into position.



- Select coach bolt and insert through metal clamp slot.



- While holding clamp and coach bolt, turn crossbar over to upright position and loosely assemble red plastic knob to the coach bolt. Do not start to tighten.
- Repeat for all legs.

Fitment



- Place crossbars back onto vehicle roof by placing one end of crossbar on the rail and swinging the other into previously marked position.



- Ensure the clamp engages correctly on inside of roof rail.



- Tighten the red plastic knob. Large Allen key can be used to help tightening knob.
- Do not over tighten.
- Ensure plastic red knob is vertical when fully tightened.

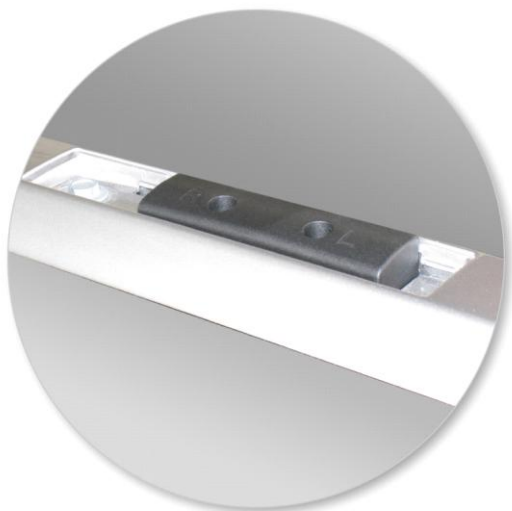


- Check crossbar is securely attached to the vehicle.
- Use keys to fit and lock covers

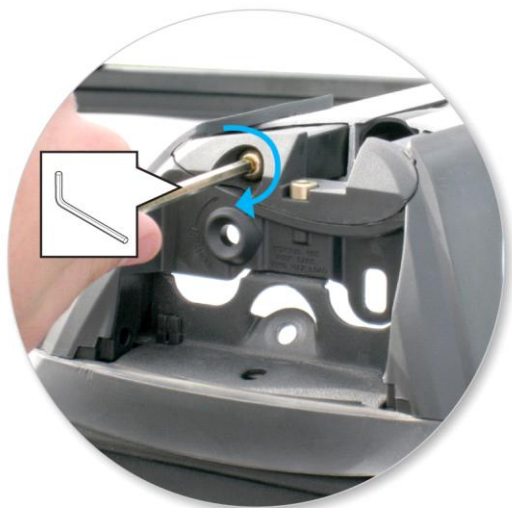
Fitment to Subaru Legacy or Liberty Wagon Sep 03+ ONLY



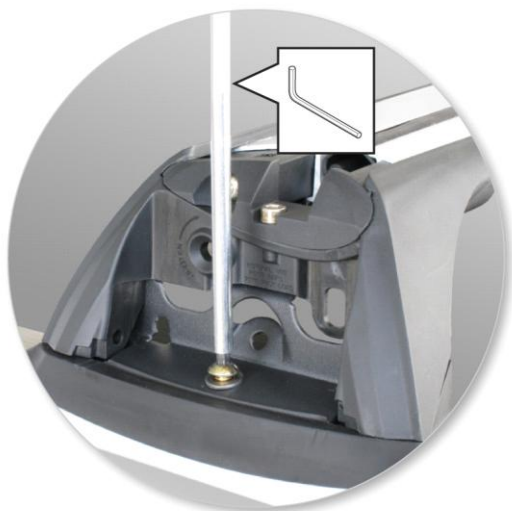
- Open or remove fixed-point covers.



- Select plastic packer blocks from fitting kit and insert into fixed-points. Blocks have L & R which should be read from beside vehicle. "L" should point to your left and "R" should point to your right.



- Position crossbar so hole in centre of metal loadplate lines up through packer block with threaded insert in fixed-point. If standing on the right side of vehicle, use hole marked "R". If on the left use hole marked "L".
- Tighten adjusting screw to 5 Nm.



- When fitting type B crossbars, tighten using Allen Key located inside one of the right hand side covers to assist.
- Using long capscrew and washer, secure assembly onto leg (use Hex Screwdriver supplied with crossbar to assist).



- Check crossbar is securely attached to the vehicle.
- Use keys to fit and lock covers

CAUTION:

Recheck all fasteners immediately after a load is applied to the crossbars.

Regularly check screws are tight.

Maintenance

- Clean the car roof and surfaces of the product that will be in contact with the car roof.
- Follow the fitting instructions for fitting the product to your vehicle. Make sure all steps are carried out in order.
- Set crossbars a minimum distance of 700mm apart where no other distance is specified in the fitting instructions. This is especially important when carrying long loads.
- Check unit is securely attached whenever you refit it to the vehicle. If the unit feels loose, refer to the fitting instructions and readjust.
- Some sunroofs and radio antennae cannot be used when the product is fitted.
- Do not modify this product.
- Refer to the maximum permitted load capacity specified in the fitting instructions. Do not exceed the vehicle manufacturers roof load rating if it is lower than the maximum load capacity specified in the fitting instructions.
- Loads should not overhang the sides of the product and be evenly distributed with the lowest possible centre of gravity.
- Long loads should be secured with non-elastic straps to the front and rear of the vehicle.
- Objects with pointed ends (skis) should be carried with the pointed ends to the rear of the vehicle.
- Remove all loose or removable objects from the load prior to loading.
- Make sure all loads are securely fastened with non-elastic straps. Check regularly during longer journeys.

- A loaded roof rack system can alter the performance of your vehicle. Be especially aware of the effects of side winds, changing of direction, and braking performance. Avoid rapid acceleration and deceleration. Drive carefully.
 - Note that the total height of the vehicle increases when upright loads are carried.
 - Products should be locked during transport if they have locks fitted.
 - Check and replace worn out or defective parts.
 - Keep the product clean and maintained.
 - Never drive into a car wash with the roof rack system fitted.
 - Lubricate locks and adjusting screws at regular intervals.
 - Remove the products from the vehicle when not in use. Make sure all loose parts are stored safely.
-

● Hubco Automotive Ltd
P. O. Box 11017
Christchurch
NEW ZEALAND

www.whispbar.com
