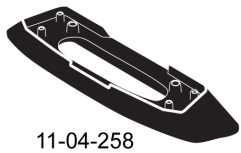
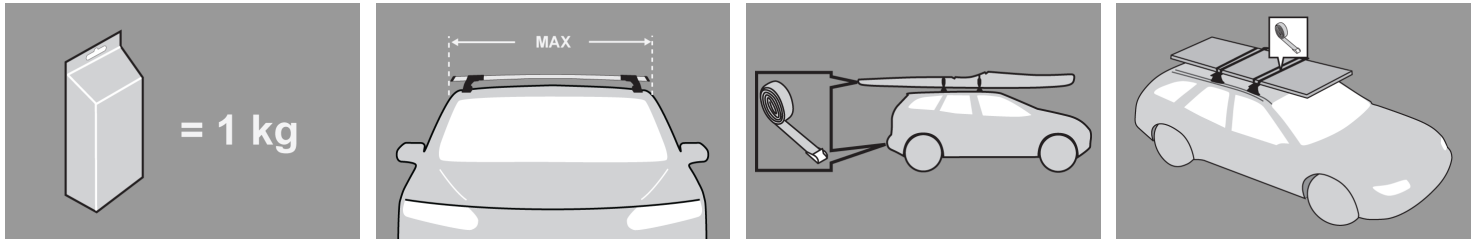


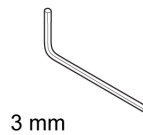
GB Fitting Instructions for Basic Carrier



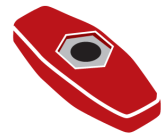
x 4



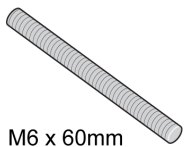
x 4



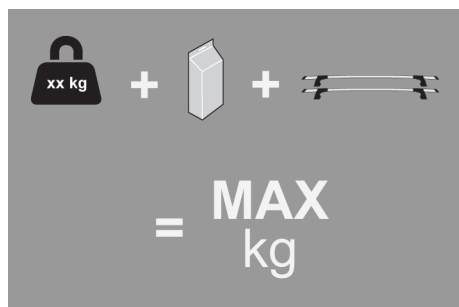
x 1



x 4



x 4



MAX kg



W/P WHD

MAX kg



W/P WHD

Kia

Cee'd , 5dr Hatch 06-+

EU 75 75

Cee'd , 5dr Hatch 07-+

ZA 75 75

Mazda

3 , 4dr Sedan 04- 09

EU 75 75

3 , 4dr Sedan 04- 09

ZA 75 75

3 , 4dr Sedan 04- 09

US 75 75

3 , 4dr Sedan Jan 04-Apr 09

NZ 75 75

3 , 4dr Sedan Jan 04-Mar 09

AU 75 75

3 , 5dr Hatch 04- 09

EU 75 75

3 , 5dr Hatch 04- 09

US 75 75

3 , 5dr Hatch 04- 09

ZA 75 75

3 , 5dr Hatch Jan 04-Apr 09

NZ 75 75

3 , 5dr Hatch Jan 04-Mar 09

AU 75 75

6 , 4dr Sedan 02- 07

EU 75 75

6 , 4dr Sedan 02- 08

ZA 75 75

6 , 4dr Sedan 03- 08

US 75 75

6 , 4dr Sedan 07-+

EU 75 75

6 , 4dr Sedan 08-+

US 75 75

6 , 4dr Sedan Aug 02-Jan 08

AU 75 75

6 , 4dr Sedan Feb 08-+

NZ 75 75

6 , 4dr Sedan Feb 08-+

AU 75 75

6 , 4dr Sedan Jun 02-Jan 08

NZ 75 75

6 , 5dr Estate 02- 07

EU 75 75

6 , 5dr Hatch 02- 07

EU 75 75

6 , 5dr Hatch 02- 08

ZA 75 75

6 , 5dr Hatch 04- 08

US 75 75

6 , 5dr Hatch 08-+

US 75 75

6 , 5dr Hatch Aug 02-Jan 08

AU 75 75

6 , 5dr Hatch Feb 08-+

AU 75 75

6 , 5dr Hatch Feb 08-+

NZ 75 75

6 , 5dr Hatch Jan 02-Jan 08

NZ 75 75

6 , 5dr Liftback 07-+

EU 75 75

6 , 5dr Wagon 04- 07

US 75 75

6/Atenza , 5dr Wagon Jun 02-Feb 08

AU 75 75

6/Atenza , 5dr Wagon Jun 02-Feb 08

NZ 75 75

CX-7 , 5dr SUV 06-+

EU 75 75

CX-7 , 5dr SUV 07-+

US 75 75

CX-7 , 5dr SUV Nov 06-+

AU 75 75

CX-7 , 5dr SUV Nov 06-+

NZ 75 75

First Time Installation



- Remove parts from packaging and check contents. Contact your Prorack dealer if parts are missing or damaged.



- This kit fits type A, B, C and D.
- These instructions show type A crossbar fitted. They also apply to type B, C and D.



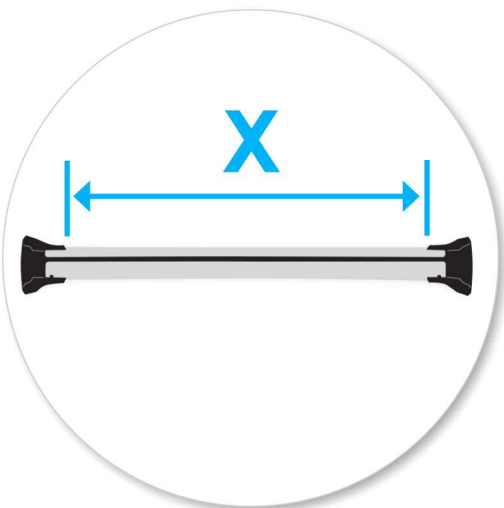
- Use keys to remove covers.



- Use hex screwdriver to reverse adjusting screw 10 turns.



- Press adjusting screw and pull crossbar legs out. Refer to the crossbar instructions for crossbar adjustment.
- Ensure each end of the crossbar is adjusted equally.



- Adjust crossbar in or out to suit vehicle. Refer to the crossbar instructions for crossbar adjustment.
- Attaches to factory-fitted mounting points
- Please check the rear of this manual for information relating specifically to your vehicle.



- Tighten adjusting screw to 5 Nm.



- Remove clamp block by pressing backwards.



- Select plastic internal block (from fitting kit) and insert into foot.
- Repeat for all legs.

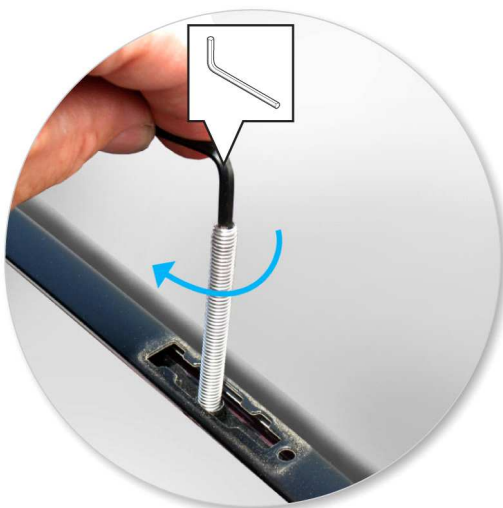


- Fit rubber pads (supplied with fitting kit) to foot. Pad may vary in shape to that shown.
- Make sure the pad fits into the holes underneath the foot.

Fitment



- Open or remove fixed-point covers.



- Select grubscrews and screw into the vehicle's fixed points.
- Do not over tighten.
- Repeat for all four positions.



- Place crossbar foot over grubscrews.



- Tighten the red plastic knob. The side with the nut showing should be facing up.



- Ensure the red plastic knob is in the position shown when fully tightened.
- Repeat for all legs.



- Check crossbar is securely attached to the vehicle.
- Use keys to fit and lock covers

CAUTION:

Recheck all fasteners immediately after a load is applied to the crossbars.

Regularly check screws are tight.

Maintenance

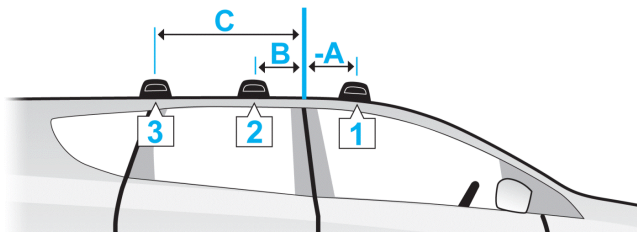
- Clean the car roof and surfaces of the product that will be in contact with the car roof.
- Follow the fitting instructions for fitting the product to your vehicle. Make sure all steps are carried out in order.
- Set crossbars a minimum distance of 700mm apart where no other distance is specified in the fitting instructions. This is especially important when carrying long loads.
- Check unit is securely attached whenever you refit it to the vehicle. If the unit feels loose, refer to the fitting instructions and readjust.
- Some sunroofs and radio antennae cannot be used when the product is fitted.
- Do not modify this product.
- Refer to the maximum permitted load capacity specified in the fitting instructions. Do not exceed the vehicle manufacturers roof load rating if it is lower than the maximum load capacity specified in the fitting instructions.
- Loads should not overhang the sides of the product and be evenly distributed with the lowest possible centre of gravity.
- Long loads should be secured with non-elastic straps to the front and rear of the vehicle.
- Objects with pointed ends (skis) should be carried with the pointed ends to the rear of the vehicle.
- Remove all loose or removable objects from the load prior to loading.
- Make sure all loads are securely fastened with non-elastic straps. Check regularly during longer journeys.

- A loaded roof rack system can alter the performance of your vehicle. Be especially aware of the effects of side winds, changing of direction, and braking performance. Avoid rapid acceleration and deceleration. Drive carefully.
- Note that the total height of the vehicle increases when upright loads are carried.
- Products should be locked during transport if they have locks fitted.
- Check and replace worn out or defective parts.
- Keep the product clean and maintained.
- Never drive into a car wash with the roof rack system fitted.
- Lubricate locks and adjusting screws at regular intervals.
- Remove the products from the vehicle when not in use. Make sure all loose parts are stored safely.

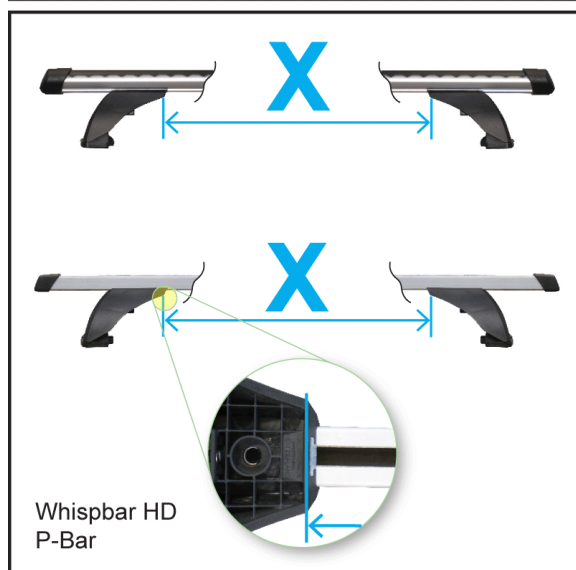
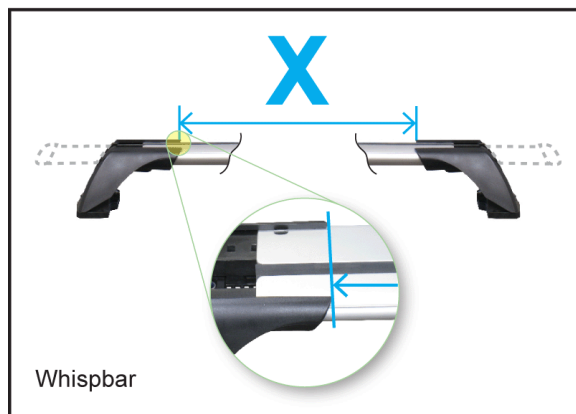
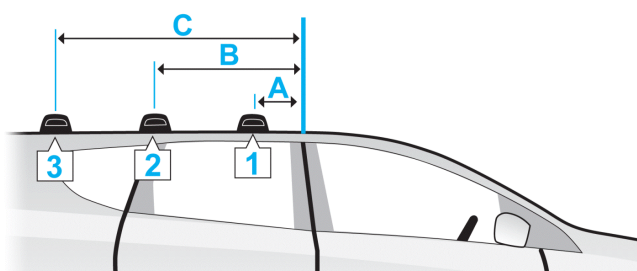
- Hubco Automotive Ltd
P. O. Box 11017
Christchurch
NEW ZEALAND

www.whispbar.com

A = -



A = +



Kia Cee'd , 5dr Hatch 06-+ (EU)

	A	B	C	X		
				1	2	3
Kia Cee'd , 5dr Hatch 06-+ (EU)	-9cm	73cm	-	825mm	795mm	-
	-3 9/16ths"	28 3/4"	-	32 1/2"	31 5/16ths"	-
Kia Cee'd , 5dr Hatch 07-+ (ZA)	-9cm	73cm	-	825mm	795mm	-
	-3 9/16ths"	28 3/4"	-	32 1/2"	31 5/16ths"	-
Mazda 3 , 4dr Sedan 04- 09 (EU)	-33cm	35cm	-	848mm	834mm	-
	-13 "	13 3/4"	-	33 3/8"	32 13/16ths"	-
Mazda 3 , 4dr Sedan 04- 09 (US)	-33cm	35cm	-	848mm	834mm	-
	-13 "	13 3/4"	-	33 3/8"	32 13/16ths"	-
Mazda 3 , 4dr Sedan 04- 09 (ZA)	-33cm	35cm	-	848mm	834mm	-
	-13 "	13 3/4"	-	33 3/8"	32 13/16ths"	-
Mazda 3 , 4dr Sedan Jan 04-Apr 09 (NZ)	-33cm	35cm	-	848mm	834mm	-
	-13 "	13 3/4"	-	33 3/8"	32 13/16ths"	-
Mazda 3 , 4dr Sedan Jan 04-Mar 09 (AU)	-33cm	35cm	-	848mm	834mm	-
	-13 "	13 3/4"	-	33 3/8"	32 13/16ths"	-
Mazda 3 , 5dr Hatch 04- 09 (EU)	-33cm	35cm	-	843mm	825mm	-
	-13 "	13 3/4"	-	33 3/16ths"	32 1/2"	-
Mazda 3 , 5dr Hatch 04- 09 (US)	-33cm	35cm	-	843mm	825mm	-
	-13 "	13 3/4"	-	33 3/16ths"	32 1/2"	-
Mazda 3 , 5dr Hatch 04- 09 (ZA)	-33cm	35cm	-	843mm	825mm	-
	-13 "	13 3/4"	-	33 3/16ths"	32 1/2"	-
Mazda 3 , 5dr Hatch Jan 04-Apr 09 (NZ)	-33cm	35cm	-	843mm	825mm	-
	-13 "	13 3/4"	-	33 3/16ths"	32 1/2"	-
Mazda 3 , 5dr Hatch Jan 04-Mar 09 (AU)	-33cm	35cm	-	843mm	825mm	-
	-13 "	13 3/4"	-	33 3/16ths"	32 1/2"	-
Mazda 6 , 4dr Sedan 02- 07 (EU)	-36cm	30cm	-	808mm	788mm	-
	-14 3/16ths"	11 13/16ths"	-	31 13/16ths"	31 "	-
Mazda 6 , 4dr Sedan 02- 08 (ZA)	-36cm	30cm	-	808mm	788mm	-
	-14 3/16ths"	11 13/16ths"	-	31 13/16ths"	31 "	-
Mazda 6 , 4dr Sedan 03- 08 (US)	-36cm	30cm	-	808mm	788mm	-
	-14 3/16ths"	11 13/16ths"	-	31 13/16ths"	31 "	-
Mazda 6 , 4dr Sedan 07-+ (EU)	-28cm	33cm	-	836mm	818mm	-
	-11 "	13 "	-	32 15/16ths"	32 3/16ths"	-
Mazda 6 , 4dr Sedan 08-+ (US)	-28cm	33cm	-	836mm	818mm	-
	-11 "	13 "	-	32 15/16ths"	32 3/16ths"	-

Mazda 6 , 4dr Sedan Aug 02-Jan 08 (AU)	-36cm -14 3/16ths"	30cm 11 13/16ths"	- -	808mm 31 13/16ths"	788mm 31 "	- -
Mazda 6 , 4dr Sedan Feb 08-+ (AU)	-28cm -11 "	33cm 13 "	- -	836mm 32 15/16ths"	818mm 32 3/16ths"	- -
Mazda 6 , 4dr Sedan Feb 08-+ (NZ)	-28cm -11 "	33cm 13 "	- -	836mm 32 15/16ths"	818mm 32 3/16ths"	- -
Mazda 6 , 4dr Sedan Jun 02-Jan 08 (NZ)	-36cm -14 3/16ths"	30cm 11 13/16ths"	- -	808mm 31 13/16ths"	788mm 31 "	- -
Mazda 6 , 5dr Estate 02- 07 (EU)	-30cm -11 13/16ths"	58cm 22 13/16ths"	94cm 37 "	800mm 31 1/2"	765mm 30 1/8"	755mm 29 3/4"
Mazda 6 , 5dr Hatch 02- 07 (EU)	-30cm -11 13/16ths"	36cm 14 3/16ths"	- -	808mm 31 13/16ths"	788mm 31 "	- -
Mazda 6 , 5dr Hatch 02- 08 (ZA)	-30cm -11 13/16ths"	36cm 14 3/16ths"	- -	808mm 31 13/16ths"	788mm 31 "	- -
Mazda 6 , 5dr Hatch 04- 08 (US)	-30cm -11 13/16ths"	36cm 14 3/16ths"	- -	808mm 31 13/16ths"	788mm 31 "	- -
Mazda 6 , 5dr Hatch 08-+ (US)	-28cm -11 "	33cm 13 "	- -	836mm 32 15/16ths"	818mm 32 3/16ths"	- -
Mazda 6 , 5dr Hatch Aug 02-Jan 08 (AU)	-30cm -11 13/16ths"	36cm 14 3/16ths"	- -	808mm 31 13/16ths"	788mm 31 "	- -
Mazda 6 , 5dr Hatch Feb 08-+ (AU)	-28cm -11 "	33cm 13 "	- -	836mm 32 15/16ths"	818mm 32 3/16ths"	- -
Mazda 6 , 5dr Hatch Feb 08-+ (NZ)	-28cm -11 "	33cm 13 "	- -	836mm 32 15/16ths"	818mm 32 3/16ths"	- -
Mazda 6 , 5dr Hatch Jan 02-Jan 08 (NZ)	-30cm -11 13/16ths"	36cm 14 3/16ths"	- -	808mm 31 13/16ths"	788mm 31 "	- -
Mazda 6 , 5dr Liftback 07-+ (EU)	-28cm -11 "	33cm 13 "	- -	836mm 32 15/16ths"	818mm 32 3/16ths"	- -
Mazda 6 , 5dr Wagon 04- 07 (US)	-30cm -11 13/16ths"	58cm 22 13/16ths"	94cm 37 "	800mm 31 1/2"	765mm 30 1/8"	755mm 29 3/4"
Mazda 6/Atenza , 5dr Wagon Jun 02-Feb 08 (AU)	-30cm -11 13/16ths"	58cm 22 13/16ths"	94cm 37 "	800mm 31 1/2"	765mm 30 1/8"	755mm 29 3/4"
Mazda 6/Atenza , 5dr Wagon Jun 02-Feb 08 (NZ)	-30cm -11 13/16ths"	58cm 22 13/16ths"	94cm 37 "	800mm 31 1/2"	765mm 30 1/8"	755mm 29 3/4"
Mazda CX-7 , 5dr SUV 06-+ (EU)	-10cm -3 15/16ths"	60cm 23 5/8"	- -	924mm 36 3/8"	892mm 35 1/8"	- -
Mazda CX-7 , 5dr SUV 07-+ (US)	-10cm -3 15/16ths"	60cm 23 5/8"	- -	924mm 36 3/8"	892mm 35 1/8"	- -
Mazda CX-7 , 5dr SUV Nov 06-+ (AU)	-10cm -3 15/16ths"	60cm 23 5/8"	- -	924mm 36 3/8"	892mm 35 1/8"	- -
Mazda CX-7 , 5dr SUV Nov 06-+ (NZ)	-10cm -3 15/16ths"	60cm 23 5/8"	- -	924mm 36 3/8"	892mm 35 1/8"	- -